

Climate Change and Ecology Policy and Accountability Committee

Agenda

Tuesday 21 November 2023 at 7.00 pm

Main Hall (1st Floor) - 3 Shortlands, Hammersmith, W6 8DA

Watch the meeting live: www.youtube.com/hammersmithandfulham

MEMBERSHIP

Administration	Opposition
Councillor Nicole Trehy (Chair) Councillor Ross Melton Councillor Laura Janes Councillor Stala Antoniadis	Councillor Jose Afonso

CONTACT OFFICER: Amrita White
Governance and Scrutiny
E-mail: Amrita.White@lbhf.gov.uk

Note: This meeting is open to members of the public and the building has disabled access. If you would like to attend, please contact: Amrita.White@lbhf.gov.uk

Date Issued: 13 November 2023

Climate Change and Ecology Policy and Accountability Committee Agenda

21 November 2023

<u>Item</u>	<u>Pages</u>
1. APOLOGIES FOR ABSENCE	
2. DECLARATIONS OF INTEREST <p>If a Councillor has a disclosable pecuniary interest in a particular item, whether or not it is entered in the Authority's register of interests, or any other significant interest which they consider should be declared in the public interest, they should declare the existence and, unless it is a sensitive interest as defined in the Member Code of Conduct, the nature of the interest at the commencement of the consideration of that item or as soon as it becomes apparent.</p> <p>Where Members of the public are not allowed to be in attendance and speak, then the Councillor with a disclosable pecuniary interest should withdraw from the meeting whilst the matter is under consideration. Councillors who have declared other significant interests should also withdraw from the meeting if they consider their continued participation in the matter would not be reasonable in the circumstances and may give rise to a perception of a conflict of interest.</p> <p>Councillors are not obliged to withdraw from the meeting where a dispensation to that effect has been obtained from the Standards Committee.</p>	
3. MINUTES	4 - 9
<p>To approve the minutes of the previous meeting and note any outstanding actions.</p>	
4. CIRCULAR ECONOMY STRATEGY OUTLINE AND THE INTRODUCTION OF FOOD WASTE RECYCLING AND WHEELED BINS.	10 - 41
<p>The committee is invited to discuss and comment on an overview of the circular economy strategy outline and an introduction to food waste recycling and wheeled bins.</p>	
5. DATES OF FUTURE MEETINGS	
<p>To note the dates of future meetings:</p> <ul style="list-style-type: none">• 6 February 2024• 23 April 2024	

London Borough of Hammersmith & Fulham
**Climate Change and
Ecology Policy and
Accountability
Committee
Minutes**



Tuesday 18 July 2023

PRESENT

Committee members: Councillors Nicole Trehy (Chair), Stala Antoniadou and Jose Afonso

Other Councillors: Councillor Wesley Harcourt (Cabinet Member for Climate Change and Ecology) and Paul Alexander

Officers

Bram Kainth (Strategic Director of Environment)

Hinesh Mehta (Head of Climate and Ecology)

David Gawthorpe (Team Leader, Planning and Economic Development)

Sarah Dixey (Principal Planning Officer, Planning and Economic Development)

David Woodward (Planning Officer, Planning and Economic Development)

Tim Pryce (Climate Emergency- Energy Lead)

Mark Thomlinson (Climate Engagement Lead)

John Galsworthy (Assistant Director, Parking Service)

Jim Cunningham (Climate Change Strategy and Policy Lead)

Amrita White (Committee Coordinator)

Debbie Yau (Committee Coordinator)

Guest

Etta Dale (Solar Development Manager, Repowering London)

1. APOLOGIES FOR ABSENCE

Apologies for absence has been received from Councillors Ross Melton and Laura Janes.

2. DECLARATIONS OF INTEREST

There were no declarations of interest.

3. **MINUTES**

The minutes of the meeting held on 28th March 2023 were agreed as an accurate record.

4. **CLIMATE CHANGE SUPPLEMENTARY PLANNING DOCUMENT**

David Gawthorpe (Team Leader, Planning and Economic Development) provided a presentation on the Climate Change Supplementary Planning Document (SPD) which helped ensure new homes and developments were more friendly to the environment. The new SPD offered guidance to developers, landowners, homeowners, planning officers and other interested parties when preparing and assessing planning applications. He showed slides which covered the following aspects:

- Climate change and planning
- The policy background.
- The key aims and structure of the guidance.
- The key principles of the policy
- The public consultation feedback
- The delivery timeline and next steps

Councillor Jose Afonso asked for further clarification to be provided on the main issues surrounding homes with older windows within conservation areas. David Gawthorpe noted that planners were keen to replace the traditional timber sash windows or replicate them with a modern alternative to ensure that the property was being conserved in the best way possible.

The Chair enquired if there was an opportunity for pre application discussions to be held with developers and homeowners to either build or extend their properties prior to a Planning Committee. In response David Gawthorpe explained that some preapplication discussions were held, particularly with developers. He felt that these were beneficial to encourage the use of better products and offer advice on how properties could be developed in an environmentally friendly way.

In relation to the adaptability of buildings, Councillor Stala Antoniadis suggested that it would be useful include a stipulation for the requirement of balconies for commercial buildings to improve natural ventilation and the wellbeing of employees through their working environment. In response David Gawthorpe thanked Councillor Stala Antoniadis for her suggestion and noted that this could be considered as part of the new policy for the local plan. He explained that further discussions would be held with specialist team members to ascertain if this could also be included in the SPD.

Action: David Gawthorpe

Councillor Stala Antoniadis queried if there was any scope to future proof buildings to accommodate the fitting of air source heat pumps. David Gawthorpe said that officers were striving to achieve this by encouraging new renewables on properties. Officers would ensure that there was good practice available outside of the planning remit for residents to follow and implement.

Councillor Stala Antoniadou also requested that the SPD be updated with some guidance around more affordable alternative options to double glazed sash windows such as secondary glazing, curtains, and thermal blinds for housing within the conservation areas.

Action; David Gawthorpe

The Chair queried if there was any plans for the government to introduce improved guidelines for conservation areas. In response David Gawthorpe explained that conservation areas currently did not have permitted development rights. The government was frequently updating their development rights policy, however he felt that for now it was likely that they would continue to recommend that conservation areas followed the planning process.

David Woodward (Planning Officer, Planning and Economic Development) explained that officers responded to all government consultations submitted to the Council. Therefore, this issue would be raised at the first opportunity if the Council received any proposals that included development rights for conservation areas within the borough.

Councillor Paul Alexander asked whether the Council recommended a more holistic approach for the selection of building materials and questioned how this could be achieved. David Gawthorpe explained that people had the option to choose their own products and the Council did not have the power to insist on what was being used. However, as technology progressed officers would improve the SPD, including the Council's website to promote better practice, on the use of environmentally friendly products.

Councillor Wesley Harcourt (Cabinet Member for Climate Change and Ecology) commented SPD offered guidance only and was not a compulsory document. He asked for further clarification to be provided on the timescales for the completion of the local plan so that some of the key issues identified could be included as mandatory requirements. David Gawthorpe said that officers would work in collaboration with the Climate Change team to review the local plan. Whilst officers had not yet committed to a timeframe for this, it was anticipated that an exercise to collect and build some evidence would take place this year with the view to begin consultation next year.

Councillor Wesley Harcourt stressed the urgency of introducing the necessary changes to the local plan. He noted that this was important to ensure that fundamental climate change issues particularly within new developments were being addressed and made mandatory in line with the Council's climate and ecological emergency target.

Action: David Gawthorpe / Jim Cunningham

The Chair thanked officers for their presentation and provided a brief summary of the key points discussed. She recommended the importance of frequent pre-application discussions, to encourage the use of natural materials for the development of properties going forward.

RESOLVED:

That the Committee:

1. Noted and comment on the report.
2. Gave feedback on the strategy, progress, and priorities.

5. SOLAR ENERGY AND NET ZERO IN H&F

Tim Pryce (Climate Emergency- Energy Lead) and Mark Thomlinson (Climate Engagement Lead) gave a presentation of the Council's work on solar power and community energy, and the role it played delivering the Council's target of net zero greenhouse gas emissions in the borough by 2030. They showed slides which covered the following aspects.

- Most of the borough's emissions came from energy used in buildings.
- Details of the net zero energy roadmap
- Benefits of solar photovoltaics and solar thermal
- Actions to grow solar energy within the borough (projects and policies)
- Details on solar energy on housing, corporate assets, and schools
- An overview of solar re-use and recycling, and related policy development
- How community energy can engage the public in the green transition

Etta Dale (Solar Development Manager, Repowering London) gave a presentation which provided an overview of the Council's partnership with Repowering London to establish the borough's first community energy group, Hammersmith & Fulham Community Energy (HFCE), which enabled residents to become involved in solar schemes across the borough. These community energy schemes stretched beyond reducing carbon emissions, with examples from elsewhere in England showing they could tackle fuel poverty, generate wider interest in climate action, and build resilience by strengthening the sense of community among residents.

Repowering London currently had eight established community energy co-operatives across London involving more than 650 investors and 60 local volunteers and directors reaching hundreds of children and young adults each year. They also offered training, mentoring and work experience opportunities that empowered the residents of London to become active and engaged citizens. Thus, they were helping to build both an energy and a social infrastructure.

Councillor Stala Antoniadis thanked Etta Dale for her presentation, noting that this was a great cause being put forward. She asked for further details to be provided on the progress of the Energy Local Roupell Park (ELRP) project in Brixton. In response

Etta Dale explained that this was a new initiative available to residents living on Roupell Park Estate in Brixton. This was an opportunity to save money on your electricity bill while supporting clean solar energy generated on the rooftops of Roupell Park Estate. She noted that Repowering London had an ongoing partnership with Octopus energy and provided an outline of how the traffic and charges for electricity were applied.

Relating to the social housing retrofit strategy, Councillor Jose Afonso queried if there was scope to offer this as a trial on a specific estate within the borough for those residents to benefit from this initiative. Tim Pryce (Climate Emergency- Energy Lead) said that this could be considered as part of the wider retrofit social housing strategy. He outlined the limitations the Council faced, noting that there was currently no mechanism to sell electricity directly to residents.

The Chair asked how Repowering London was positioned within the larger industry for solar panels where rogue trading was still a cause for concern. Etta Dale felt that the industry had improved in the more recent years, however there were still many challenges being identified. She highlighted that Repowering London had been working closely with its own trusted supplier for 8 years who also provided an operations and maintenance service to Repowering London.

The Chair asked if there was potential for Repowering London to expand its relationship with the current supplier to include domestic installations. Etta Dale commented that this was currently being progressed as a key consideration within the retrofit work that was already being carried out by Repowering London.

The Chair commented that there were many challenges faced due to the shortage of skilled workers and asked for further details to be provided on the training programme executed. Etta Dale commented that she was pleased to note that Repowering London were working with Newham College on apprenticeships. She provided details of how this would work, highlighting that community instalments would be provided to Newham College to give students an opportunity to work on these.

A resident thanked the Chair for the invite to the Committee. She asked how resident engagement would be carried out within the community. Etta Dale provided an overview of how engagement within the local community would be executed, noting that this would take place in collaboration with volunteer led co-operatives. There was also funding available for public engagement events. In addition, information leaflets would also be made available to local food banks and residents.

The Chair thanked officers for their presentations and the members of the public in attendance. She noted that she was very excited by the development of this initiative and requested that this be amplified as much as possible and requested that members be kept updated of any community engagement events.

RESOLVED:

That the Committee:

1. Noted and comment on the report.
2. Gave feedback on the strategy, progress, and priorities.

6. DATES OF FUTURE MEETINGS

The next meeting will take place on 21st November 2023

The Chair noted that she would request an update and presentation on food waste recycling for the next meeting and noted that if there were any further requests to contact the Chair and Amrita White.

Meeting started: 7pm
Meeting ended: 8:30pm

Chair

Contact officer: Amrita White
Committee Co-ordinator
Governance and Scrutiny
☎:
E-mail: amrita.white@lbhf.gov.uk

Report to: Climate Change and Ecology Policy and Accountability Committee

Date: 21/11/2023

Subject: Circular economy strategy outline and the introduction of food waste recycling and wheeled bins.

Report author: Laura Humphreys, Climate Alliance & Circular Economy Lead

Responsible Director: Bram Kainth, Strategic Director of Environment

SUMMARY

This is a covering report for a presentation on H&F’s circular economy strategy outline and an introduction to food waste recycling and wheeled bins.

RECOMMENDATIONS

1. For the Committee to note and comment on the presentation.

Wards Affected: All

Our Values	Summary of how this report aligns to the H&F Values
Doing things with local residents, not to them	A survey of all prototype areas was carried out in Autumn 2022 for the introduction of food waste recycling and wheeled bins. For street-based homes, deliveries of new bins will begin from 6th November, to last approximately 6 months. Every home will have an opportunity to ensure the new bins suit their requirements.
Rising to the challenge of the climate and ecological emergency	While the most significant sources of emissions per person in H&F remain from heating and powering homes (2.7 tonnes CO2e) and transport use (3 tonnes), the things we buy and use as organisations and individuals, including food (0.9 tonnes), recreational equipment such as phones and computers (0.3 tonnes), home furnishings (0.3 tonnes), and clothing

(0.2 tonnes), are some of the many products that add to this total.

Background Papers Used in Preparing This Report

None.

DETAILED ANALYSIS

1. The committee is invited to discuss and comment on an overview of the circular economy strategy outline and an introduction to food waste recycling and wheeled bins.

Circular economy strategy

2. The 'circular economy' refers to a range of approaches to move away from an unsustainable model of consumption in society in which materials are extracted, used, and then wasted. Circular economy approaches aim to keep materials in use including through improved product design, repair, reuse, sharing and recycling, to reduce our reliance on extraction of new materials.
3. The circular economy strategy outlines an ambitious plan to scale-up what we are already delivering to create conditions for low-carbon living in the borough and improve the way we lead our own procurement, purchasing and resource use.
4. Our action plans embed circular economy principles across the borough and Council such as sharing, reuse and repair. The accompanying presentation outlines this in more detail.

Food waste recycling and wheeled bins

5. Hammersmith & Fulham Council will introduce new food waste collections for more than 50,000 local households in the coming months. In addition, more than 16,000 local households will receive new wheeled bins.
6. Bins will only be given for those with suitable and accessible space and an assisted collection service is available for residents that need additional support.
7. The accompanying presentation presents further detail.

LIST OF APPENDICES

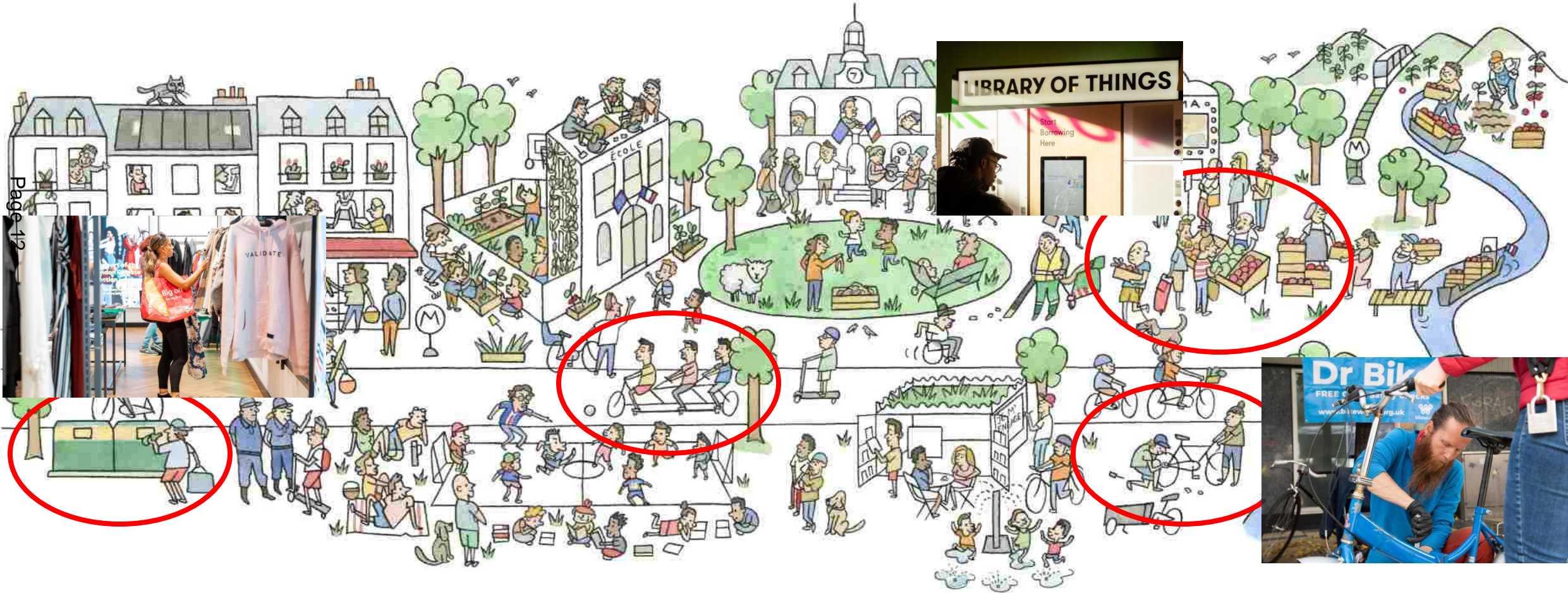
1. 'Circular economy overview and introduction to food waste recycling and wheeled bins' (PowerPoint presentation)

Circular Economy Strategy

Hammersmith and Fulham Council



What does a circular economy look like?



What is the circular economy?

LINEAR
ECONOMY



RECYCLING
ECONOMY



CIRCULAR
ECONOMY



A circular economy is based on **three principles**:

- Eliminate waste and pollution
- Circulate products and materials
- Regenerate nature

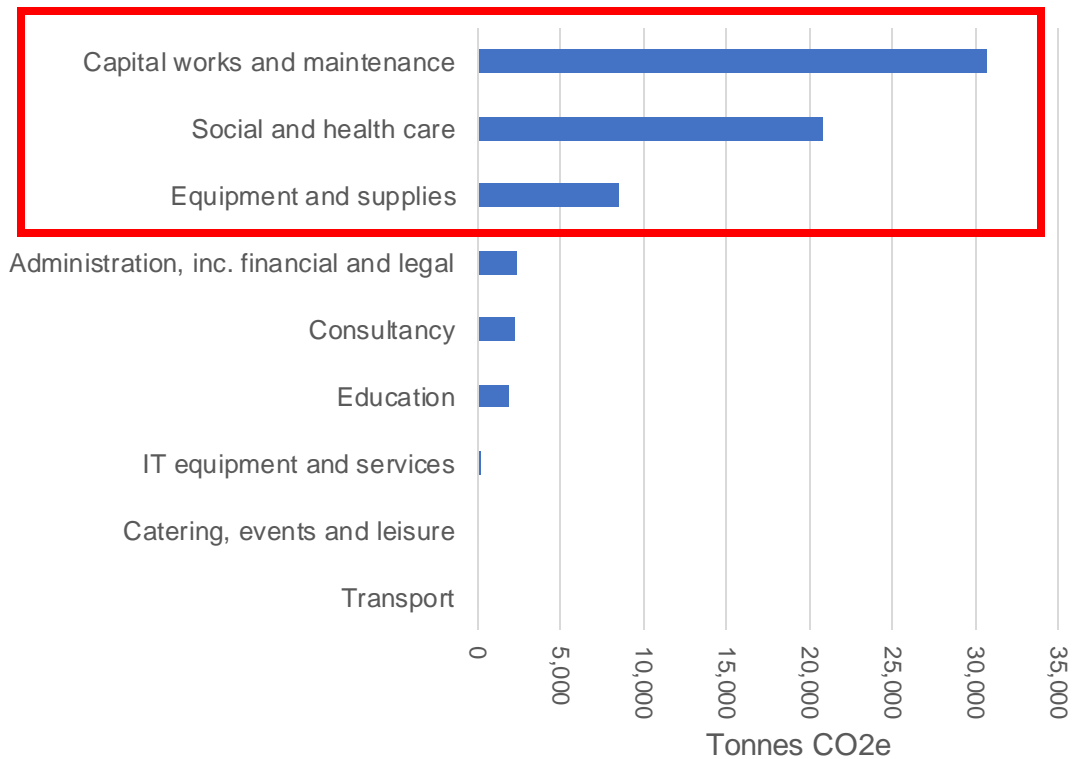
Six approaches:

1. Reduce
2. Reuse
3. Redistribute (share)
4. Repair
5. Refurbish
6. Recycle

Why do we need to embrace the circular economy?

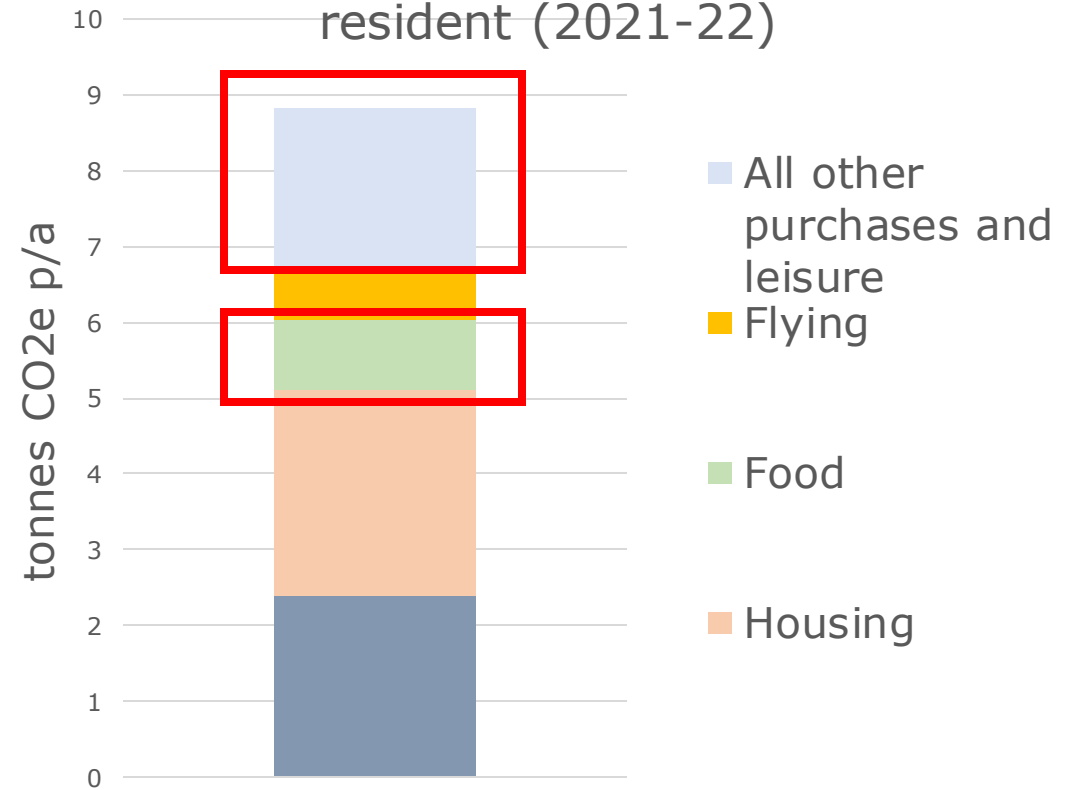
Direct control of circularity

Emissions from H&F procurement categories



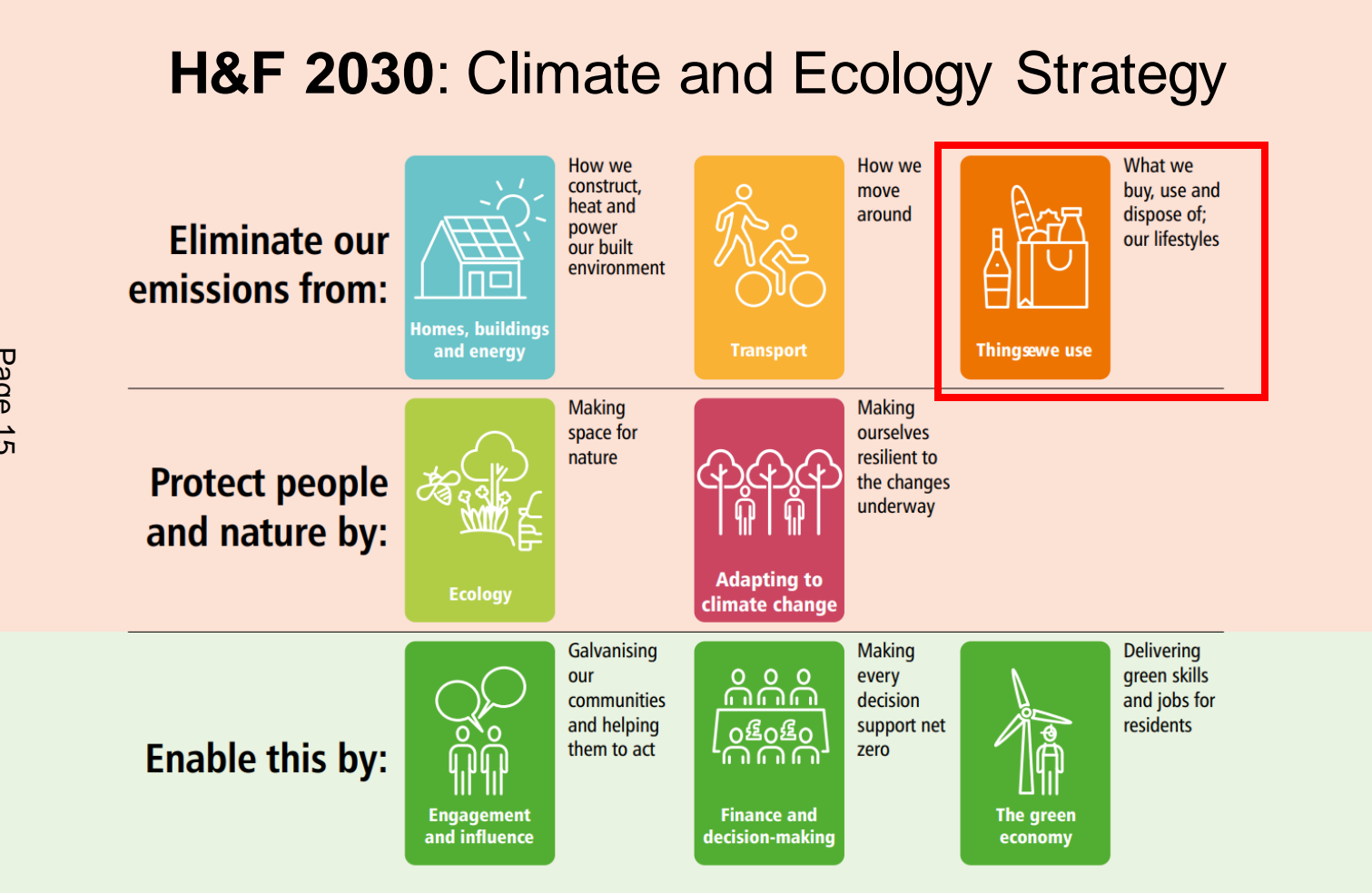
Indirect control of circularity

Consumption-based emissions per resident (2021-22)



Climate & ecology strategy

Page 15



‘Things we use’ pillar has **two key themes**:

1. Enabling low-carbon options

- Sustainable food
- Low-carbon living

2. Circular economy

- Increase sharing, reuse and repair
- Reduce what we throw away
- Circular economy as a mechanism for employment

How are we already embedding circularity?

West London Alliance



LONDON BOROUGH OF HAMMERSMITH & FULHAM

Report to: Cabinet
 Date: 07/03/2022
 Subject: Adopting the WLA low-carbon procurement policy
 Report of: Councillor Wesley Harcourt, Cabinet Member for Environment
 Report author: Jim Cunningham, Climate Policy and Strategy Lead
 Responsible Director: Sharon Lea, Strategic Director for Environment

SUMMARY

This paper seeks approval to adopt the West London Alliance (WLA) low carbon procurement policy (the policy). This has been developed collaboratively by H&F and eight west London boroughs, and presents a unified expectation of suppliers for council contracts on tackling the climate emergency across the subregion.

A charter with suppliers accompanies this, for inclusion in all new tenders, and for circulation to existing suppliers to encourage them to sign up to the same principles. A toolkit has also been developed to support commissioning and procurement officers to adopt climate considerations into all procurement.

RECOMMENDATIONS

That Cabinet:

- Adopts the West London Alliance low-carbon procurement policy.
- Approves the inclusion of the accompanying low-carbon charter in all future tenders as a precondition for successful tenders.
- Approves that the charter be sent to all current suppliers to encourage them to voluntarily agree to its principles.
- Approves the inclusion of climate impact considerations in the development and evaluation of all future procurements, supported by the low-carbon toolkit and other support and advice available from the climate unit and elsewhere.

Wards Affected: All

Climate implications toolkit

This toolkit is a self-assessment to help officers think about how their projects, procurements, commissioning, and services can align with H&F's net zero carbon target and sixth council value: "Rising to the challenge of the climate and ecological emergency". It also supports report authors to draft the climate implications section on decision reports, now required on decisions over £300,000 and procurement strategy reports.

How to use the tool

The self-assessment is intended to help officers reflect critically on their project or service's climate impact. We recommend you answer all the questions, even if the answer is 'not applicable'. It is a reflective tool, not a framework for approving or rejecting a decision, so it will work best if each question is considered honestly and carefully.

The next tab presents a set of questions about the initiative or decision against H&F's five 'climate challenges', and a drop-down range of answers. Each answer is colour-coded to indicate its climate impact and recommended way forward as follows:

Colour code	Recommendation
Dark green	Strong positive impacts for the climate emergency. Recommendation to proceed as is with this aspect.
Light green	Some positive impact for the climate emergency. Recommendation to further enhance this aspect where possible and proceed.
Yellow	Some negative impacts for the climate emergency. Recommendation to review these aspects and find mitigations where possible.
Red	Considerable inconsistency with the council's net zero objective. Strong recommendation to review these aspects and find mitigations.
Grey	Neutral or not applicable. Recommendation to consider how benefits could be achieved in this area, but otherwise proceed.

These questions should be considered for services, goods and projects we procure as well as those we deliver directly. Delivery models, specifications and tender evaluation should be shaped to ensure our contractors are aligned with our net zero commitment.

When answering these questions you should consider **direct** and **indirect** impacts. For example, a highways project to install traffic reduction measures might not use electric vehicles or plant in its delivery, but still lead to reduced vehicle use once in place.

Against each climate challenge, the toolkit presents possible actions to improve the climate impact of the decision.

Low-carbon procurement policy, charter and toolkit

Supplier commitment to low-carbon principles.

Providing a common framework for monitoring supply chain commitment to decarbonisation

Climate implications toolkit in decisions

Required for key decisions and procurement strategies in H&F.

29 qualitative, multiple-choice questions about H&F projects and possible climate challenges

What are we doing as an organisation?

Direct control of circularity

Page 17



Built environment – buildings

Low-carbon construction for Sands End Arts & Community Centre

Award winning design and construction



Built environment - highways

Recycled aggregate

Warm-mix asphalt



Circular economy principles consumer goods

Good Things Foundation laptop donation

What are we doing in the borough?

Indirect control of circularity

Page 18



Built environment

Climate Supplementary Planning Document



Circular economy principles in action for consumer goods

Electricals, textiles and bicycle repair

Library of Things



Food and diets

Food waste collections for residents and schools

Food procurement commitment development

One World Living programme

The One World Living (OWL) programme **aims to reduce consumption-based emissions by two-thirds by 2030** from food, plastics, textiles and electricals.

Hammersmith & Fulham is the **Electricals theme lead** for the programme.

FOOD



Food procurement
commitment development

PLASTIC



- Mudlarks projects
- Eco refill

TEXTILES



Clothing swap events

ELECTRICALS



Fixing events

Leading the way in the circular economy

Objectives

The intended outcomes of the circular economy strategy are:

- Lower embodied carbon emissions from use of goods and materials
- Support the cost-of-living-crisis
- Prioritisation of actions and targets
- Support the growth of circular business models in our borough and supply chain
- Pre-empt government regulation

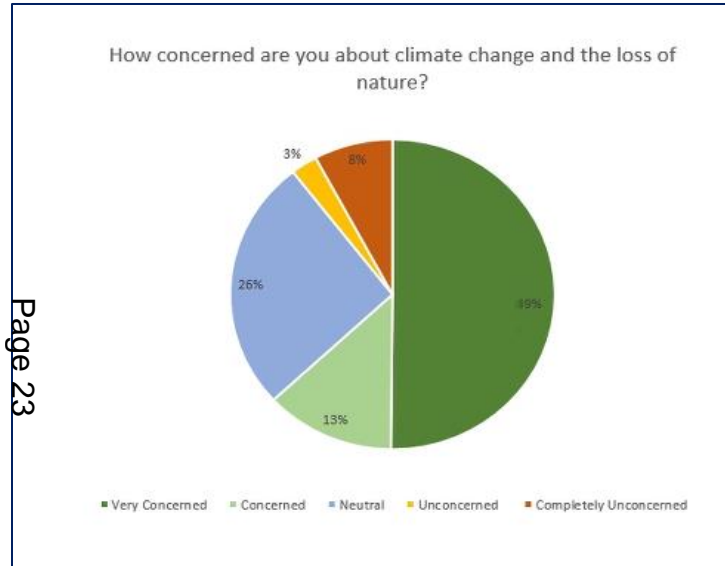
To deliver these, the circular economy strategy aims to:

- Track the progress towards our goals
- Identify cost and carbon savings
- Measure the reduction of use and disposal of goods and materials

Circular economy framework – policy and practice

Research	Stakeholder engagement	Framework	Data collection	Action plan	Project delivery
<ul style="list-style-type: none">• Ongoing review of existing datasets, reports, strategies, route maps and frameworks.	<ul style="list-style-type: none">• Workshops delivered with 11 H&F teams.• Engaged with Manchester and Islington Council.• Support from Ellen Macarthur, ReLondon, Arup.	<ul style="list-style-type: none">• Develop a circular economy framework within a strategy to embed the circular economy in practice for the organisation.	<ul style="list-style-type: none">• Material flow analysis (MFA) developed where H&F has direct control over procurement• Develop a borough survey for indirect control	<ul style="list-style-type: none">• Design, develop and implement an action plan supported by a robust evidence base• Set targets and metrics to measure success	<ul style="list-style-type: none">• Deliver projects to meet our circular economy objectives and embed the six R's across the borough

Circular economy in the borough – influence, engagement and education



Page 23

Existing data

Local data: H&F recycling and waste surveying

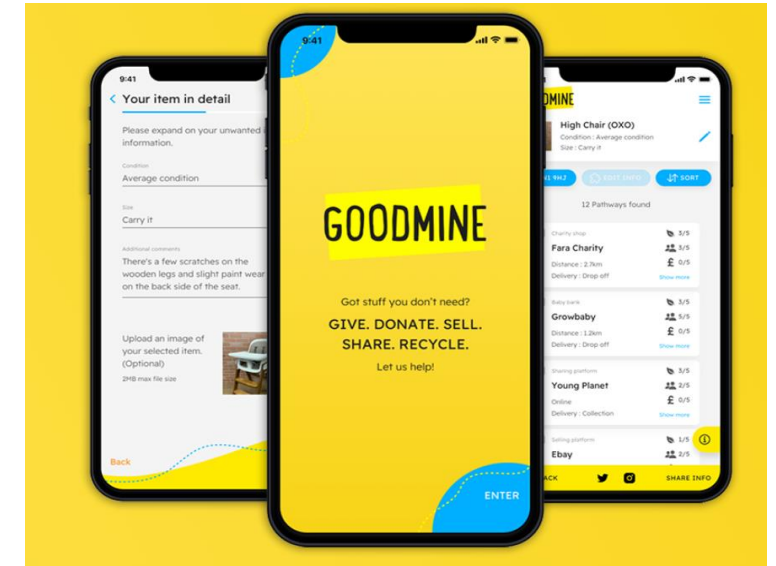
London data: e.g. ReLondon MFAs



Stakeholder engagement

boroughwide surveys, forums and workshops to fill in data gaps

Consumption and disposal behaviour in Hammersmith & Fulham



Collaborative projects

Good Mine – funded project

NHS – reduce, reuse and recycling

Workstream one: planning and delivery

Literature review

Policies, strategies and research in the circular economy

Page 25

International level	National policies and legislation	London policy frameworks	Academic research and sector support
<ul style="list-style-type: none"> • UN SDG 12 on Sustainable Consumption and Production • EU circular economy action plan 	<ul style="list-style-type: none"> • Clean Growth Strategy (2017) • Industrial Strategy (2017) • Environment Act (2021) • Manifesto commitments 	<ul style="list-style-type: none"> • London Environment Strategy (2018) • The London Plan • GLA Circular Economy Guide (2022) • One World Living (OWL) programme (2021) • London Circular Economy Routemap 	<ul style="list-style-type: none"> • Leeds University consumption-based emissions data • Skills for Londoners (2018) • The Greater London Authority Group Responsible Procurement Policy • London Food Strategy, Ellen MacArthur

Existing strategies – good practice



Amsterdam *Doughnut Economics*

Impact tool

Data collection

Partnering with businesses



Glasgow *Circular Economy Route Map*

Framework to encourage co-production

Environmental circularity

Social equality



Brighton & Hove *CE Action Plan & Route Map*

Outward vs inward

Stakeholder engagement

Tackle socio-economic conditions

Workstream two: scaling-up

Scaling up opportunities

Examples of projects and initiatives that can be delivered in H&F to embed circular economy principles.

Direct control of circularity

- Explore circular economy principles and low-carbon material use for new buildings construction.
- Vehicle sharing to reduce our officer vehicle fleet
- Paperless offices and operations.
- Cease the procurement of single-use plastic food packaging (and other items) for council premises and events.

Page 28

Indirect control of circularity

- Circular economy hubs and material storage and boroughwide, weekly repair events
- Circular business models
- All schools have food waste collections and composting
- Project partnerships with businesses, NHS (healthcare) and Imperial College London (education)
- Identify community networks for engagement

Scaling-up in the borough



Page 29

Circular economy hubs

Permanent space

Storage and warehousing

Events, training and workshops



Materials and goods reuse

Rescued and rehomed 700 solar panels

Shipment to Ukraine to power a clinic and support reconstruction



Partnerships and collaboration

Deliver circular economy projects with organisations and residents

Jobs and employment

One World Living programme

Embed and deliver the programme's **key priority areas** to embed across H&F.

FOOD

1. Implement **sustainable food procurement** policies
2. Deliver a pan-London **food waste reduction awareness campaign**
3. Deliver a pan-London **sustainable and healthy diet awareness campaign**
4. Promote **businesses to monitor food waste** via Food Waste Reduction Roadmap or Guardians of Grubs

PLASTIC

1. Adopt **low plastic policies** for councils (procurement, operations, events, schools)
2. Promote and support **refill options across London**
3. Develop range of **support and advice for small businesses on low plastic approaches** (purchasing co-ops, business recycling options)
4. Set up a **pilot cup and container/lunchbox reuse scheme** in at least one borough

TEXTILES

1. Promote a convenient **home collection services** across London
2. Review Councils' **procurement policy review** on textiles
3. Deliver an **education pack** for schools, FE, HE and community groups
4. Deliver a **consumer-driven campaign**

ELECTRICALS

1. Extend and maintain the **Repair Directory** at a London level
2. Support **repair cafes and restart parties**
3. Promote buying **refurbished devices** to residents
4. Promote existing **sharing and hiring platforms**
5. Establish accessible, trusted and **secure locations for drop-off** (computers and smartphones)
6. Broadcast the **Recycle Your Electricals campaign**

Procurement

Built Environment

Highways

Trialling warm mix asphalt

Page 31

Monitoring data and impacts of using alternative low carbon material.

Higher quantity of recycled material and recycling removed material.

All designs look for opportunities to 'green the grey'.



Consumer Goods

Digital Services

Donation and repair of council laptops

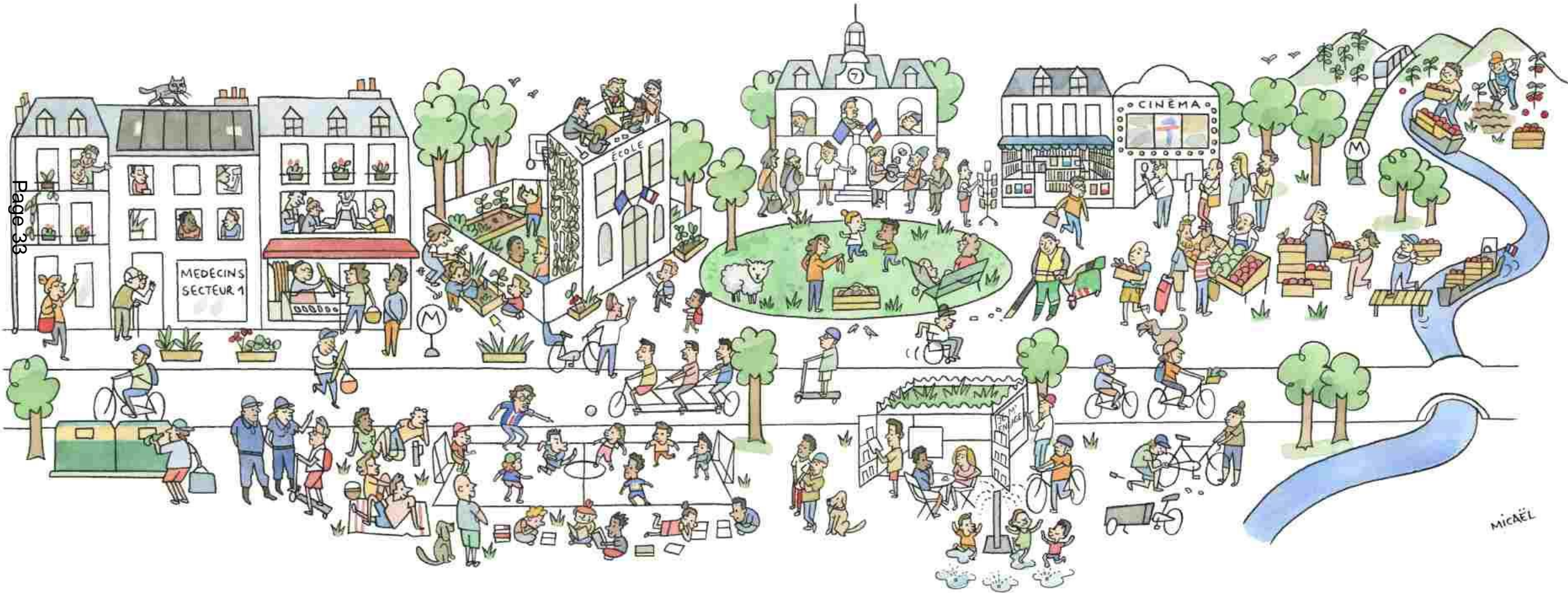
Partnership with Good Things Foundation for officer laptops.

On-site laptop repair and reuse of spare parts.



Workstream three: measuring success

How do we know we have succeeded?

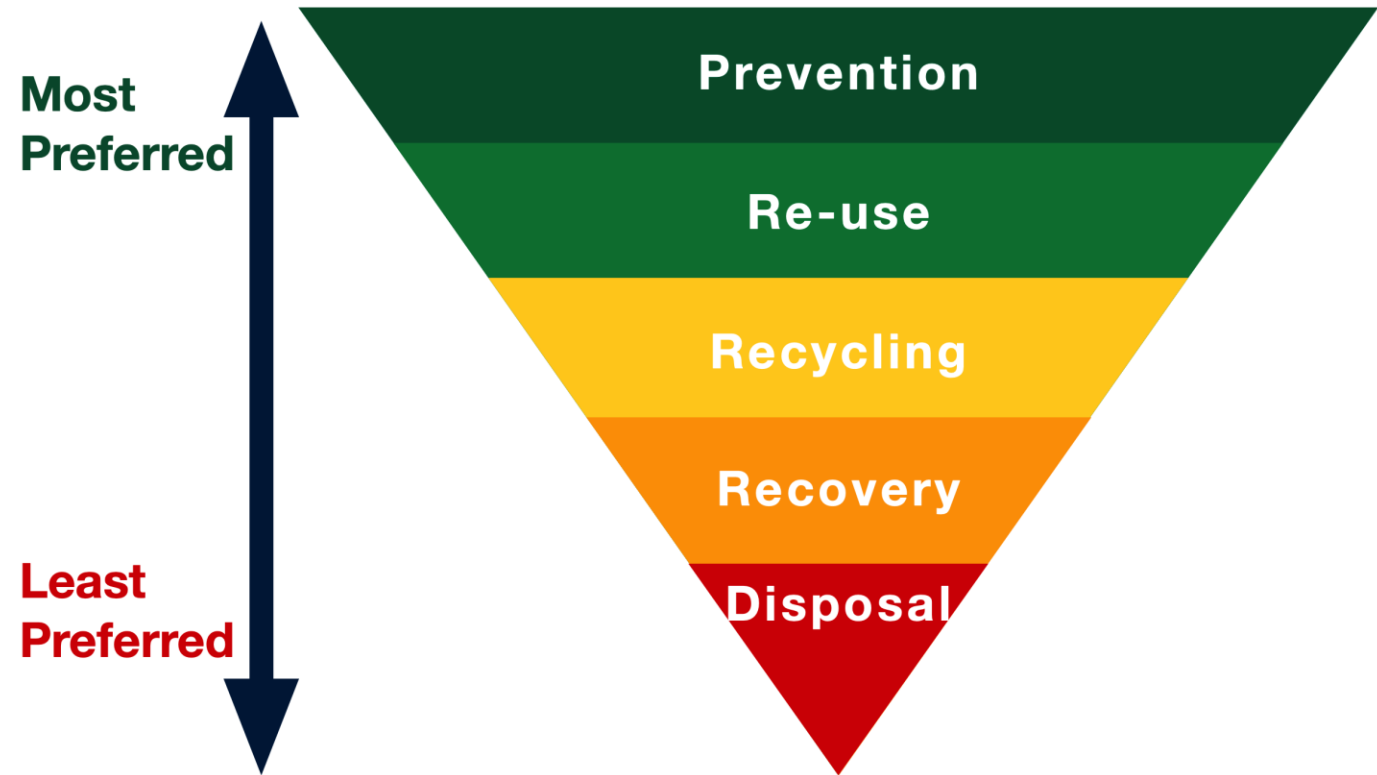


Introduction of food waste recycling and wheeled bins



Background

- Borough-wide recycling rate of about 25%
- For street-based properties, recycling is collected in clear sacks and refuse from black bags
- We tested a new “prototype” service from November 2020
- Aiming to move up the waste hierarchy (pictured)
- Avoiding food waste, and composting at home where possible, are better than using a recycling service



Prototype service outline

- Areas selected across the borough
- All households (c.6k) given indoor and outdoor food waste caddies
- All suitable households (those with enough space and access, over 4k) given two wheeled bins: a 140l bin for refuse and a 240l bin for recycling
- Doing things with residents not to them
- Larger or smaller bins provided where needed/preferred; residents can share bins if desired; assisted collections available.
- Service introduced in November 2020

**Your new
rubbish and
food waste bins
ARE COMING**

**FROM
November
2020**



 **London
recycles**

h&f
hammersmith & fulham

www.lbhf.gov.uk/newbins

Prototype service outcomes

- Recycling rate of c. 40%
- Overall quantities of waste remained stable
- Very low levels of complaints (3%) during roll-out
- Many fewer single-use plastic sacks needed
- Survey of all prototype areas carried out in Autumn 2022



Survey results

Statement	Answer
I am happy with the service	90% strongly agreed/agreed
I find the service easy to use	95% strongly agreed/agreed
I have enough space in my bins each week	88% strongly agreed/agreed
I recycle more	64% strongly agreed/agreed
My streets are cleaner	58% strongly agreed/agreed
How important are the following benefits of the prototype service?	
Being able to recycle more	87% strongly agreed/agreed
Having cleaner streets	92% strongly agreed/agreed
Being able to safely contain and store waste and recycling outside	90% strongly agreed/agreed
Reducing injuries to collection crews	86% strongly agreed/agreed

Survey results

Other outcomes

- Sharing bins: c.16% of households currently choose to share containers with a neighbour and approximately one quarter would consider doing this in future.
- Garden waste: Just under two thirds of respondents stated they would use a garden waste service if available.
- Service issues: Only 2% of respondents disagreed or strongly disagreed that the service was easy to use. When asked what, if anything, was difficult about the service, the majority of issues raised related to bins being returned to the right place or inconsistent service.

Borough-wide roll out

- For street-based homes, deliveries from 6th November, to last approximately 6 months
- Pace led by resident engagement requirements
- Bins **only** for those with suitable, accessible space
- Multiple options for bin sizes or sharing
- Assisted collection service available
- Dedicated resources in place for deliveries, engagement on-street and in back-office
- For homes with communal bin stores, food waste roll-out will start in 2024. Tailored approach for different estates and blocks, discussions already underway with Housing